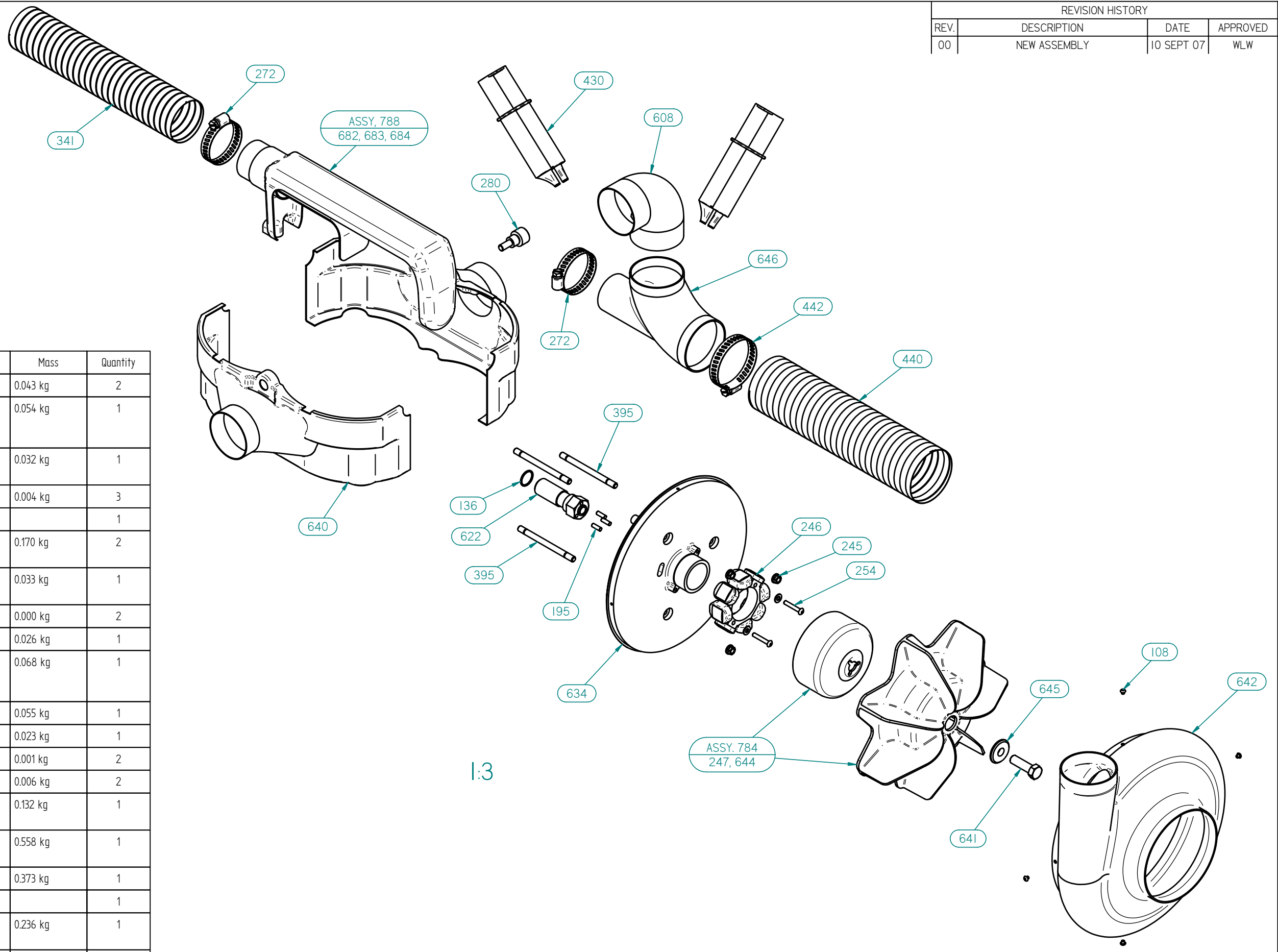



REVISION HISTORY			
REV.	DESCRIPTION	DATE	APPROVED
00	NEW ASSEMBLY	10 SEPT 07	WLW




Manifest No.	Title	Material	Mass	Quantity
272	Hose Clamp, 1 1/4" - 2 1/4"	Stainless Steel	0.043 kg	2
341	Compressor transfer ducting	Wire Re-inforced Fabric	0.054 kg	1
280	Shroud Mount Bolt	Steel Grade 12.9	0.032 kg	1
195	Retaining Pin	Steel	0.004 kg	3
788	Manifold Assembly			1
640	Cylinder Head Shroud	Carbon, Composite	0.170 kg	2
608	Extension	Carbon, Composite	0.033 kg	1
430	Adhesive, Devcon 14-300	Epoxy Adhesive	0.000 kg	2
641	Alternator Mounting Bolt	Steel, 4340	0.026 kg	1
440	Air Ducting	Wire Re-inforced Fabric	0.068 kg	1
646	Air Manifold	Carbon Fibre	0.055 kg	1
442	Hose Clamp, 57-70mm	Stainless Steel	0.023 kg	1
244	Washer, M4 Narrow	Mild Steel	0.001 kg	2
254	M4 x 25 BHSCS	steel	0.006 kg	2
622	Alternator drive-clutched transmission	4130 Steel	0.132 kg	1
634	Pedestal, as Machined	Aluminum, 6061-T6	0.558 kg	1
246	Alternator Stator	Comp	0.373 kg	1
784	Turbine Assembly			1
642	Blower Housing CW	Carbon, Composite	0.236 kg	1
108	M3 x 0.5 x 3 BHSCS	Steel Grade 10.9	0.002 kg	4
645	Washer, Turbine	Steel, 4340	0.016 kg	1
395	Stud 0.25" x 3.35"	Steel, 4140	0.063 kg	3
136	O-Ring, 16.0ID X 1.5mm	N70 Nitrile	0.000 kg	1
245	Nut flanged prevailing torque 0.25"UNF	Steel, 4140	0.006 kg	3

1:3

<p>PROPRIETARY AND CONFIDENTIAL</p> <p>THE INFORMATION CONTAINED IN THIS DRAWING IS THE SOLE PROPERTY OF AEROTWIN MOTORS CORPORATION. ANY REPRODUCTION IN PART OR AS A WHOLE WITHOUT THE EXPRESS PERMISSION OF AEROTWIN MOTORS CORPORATION IS PROHIBITED.</p> 	<p>UNLESS OTHERWISE SPECIFIED:</p> <p>INTERPRET GEOMETRIC TOLERANCING TO ANSI Y 14.5 1994</p> <p>DIMENSIONS ARE IN mm</p> <p>GENERAL TOLERANCES:</p> <p>1 DEC. PLACE = +0.5</p> <p>2 DEC. PLACES = +0.25</p> <p>3 DEC. PLACES = +0.10</p> <p>ANGULAR = +0.3°</p> <p>BREAK EDGES 0.3</p> <p>CORNER RADI 0.3</p> <p>MACHINE FINISH 125µm/3.2µm Ra</p> <p>DO NOT SCALE DRAWING</p>	<table border="1"> <tr> <th>NAME</th> <th>DATE</th> </tr> <tr> <td>DRAWN DCB</td> <td>9/8/2007</td> </tr> <tr> <td>CHECKED WLW</td> <td>9/8/2007</td> </tr> <tr> <td>ENG. APPR.</td> <td></td> </tr> <tr> <td>MFG. APPR.</td> <td></td> </tr> <tr> <td>QA</td> <td></td> </tr> </table>	NAME	DATE	DRAWN DCB	9/8/2007	CHECKED WLW	9/8/2007	ENG. APPR.		MFG. APPR.		QA		<p>DRAWING NO. 757</p> <p>TITLE:</p> <p>757, Blower Assembly, Reverse Flow</p>
	NAME	DATE													
	DRAWN DCB	9/8/2007													
	CHECKED WLW	9/8/2007													
ENG. APPR.															
MFG. APPR.															
QA															
<p>NEXT ASSY.</p> <p>USED ON</p> <p>APPLICATION</p>	<p>SCALE: SHOWN WEIGHT: SHOWN SHEET 1 OF 2</p>	<p>REV. 00</p>	<p>REVISION HISTORY</p>												

REVISION HISTORY			
REV.	DESCRIPTION	DATE	APPROVED
00	NEW ASSEMBLY	10 SEPT 07	WLW

Drawing Revision Control:				
Rev.	Date:	Mod by	Ckd:	Description:
00	10SEPT07	DCB	WLW	NEW ASSEMBLY

<p>PROPRIETARY AND CONFIDENTIAL THE INFORMATION CONTAINED IN THIS DRAWING IS THE SOLE PROPERTY OF AEROTWIN MOTORS CORPORATION. ANY REPRODUCTION IN PART OR AS A WHOLE WITHOUT THE EXPRESS PERMISSION OF AEROTWIN MOTORS CORPORATION IS PROHIBITED.</p> 			<p>UNLESS OTHERWISE SPECIFIED: INTERPRET GEOMETRIC TOLERANCING TO ANSI Y 14.5 1994 DIMENSIONS ARE IN mm GENERAL TOLERANCES: 1 DEC. PLACE = +0.5 2 DEC. PLACES = +0.25 3 DEC. PLACES = +0.10 ANGULAR = +0.3° BREAK EDGES 0.3 CORNER RADII 0.3 MACHINE FINISH 125µm/3.2µm Ra DO NOT SCALE DRAWING</p>	NAME	DATE	DRAWING NO. 757		
				DRAWN	DCB		9/8/2007	
				CHECKED	WLW		9/8/2007	TITLE:
				ENG. APPR.				757, Blower Assembly, Reverse Flow
				MFG. APPR.				
				QA				
				COMMENTS:				
	NEXT ASSY.	USED ON		SIZE	MATERIAL: REFER TO PARTS LIST	REV.		
	APPLICATION			A2	CONDITION REFER TO PART DRAWINGS	00		
				SCALE: SHOWN	WEIGHT: SHOWN	SHEET 2 OF 2		